

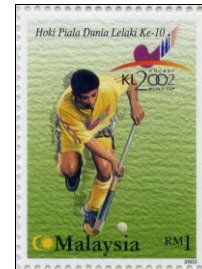
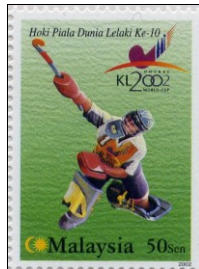
## CHAPTER FORTY-FOUR

## SPECIAL ISSUES 2002.

*Note: All illustrations in this chapter are reduced by 10% (50% for sheetlets and stationery) unless otherwise stated.*

**2 January 2002.**

**World Cup Hockey.**



Kuala Lumpur was the first city to host the Hockey World Cup twice. The previous occasion was in 1975 (see issue 75.1). The 10<sup>th</sup> Men's Hockey World Cup competition was held at the National Hockey Stadium, Bukit Jalil from 24 February to 9 March 2002, with 16 countries taking part.

Designed by Hazel Design, this issue comprised three counter sheets and a miniature sheet.

#### Counter sheets:

The three 28mm x 38mm stamps showed:

30s.: Player moving to left;

50s.: Goal-minder with stick raised;

RM1: Player moving forwards.

They were printed in sheets of 25 (5 x 5) by Percetakan Keselamatan Nasional using standard four-colour off-set lithography. There were probably four panes on the printer's sheet, all marked 1A. Sheet markings included 1A (x4) above and below columns 1 and 5, colour dots (x4) to left and right of rows 1 and 5 and the Pos Malaysia emblem in the bottom margin (below column 3?). The phosphor-coated paper gave a greenish-white fluorescent reaction and a yellow-green after-glow under ultra-violet light. The paper had watermark Multiple SPM upright. An example of the 50s. appeared initially to be without watermark. On closer examination, it appeared to have multiple images of the watermark, as if it had passed through the dandy roll several times - An explanation would be welcomed (several examples have since been seen). The comb perforations normally measured 13.6 x 13.8. The RM1 exists with perforation 14.3 and inverted watermark. On the P.13.6 x 13.8 printings, the left margin was imperforate<sup>1</sup>, the others being perforated through.

#### Miniature sheet:

The 109mm x 68mm RM3 miniature sheet showed the stadium with the cup, four small players in different poses and, in the 30mm x 41mm stamp, a large player about to hit the ball.

The stamp in the miniature sheet was perforated 12.8/12.1 x 12.5. It also existed imperforate. The imperforate sheets had a faint margin and were numbered (highest seen 029309). The paper had watermark Multiple SPM sideways reading down.

#### First day facilities:

The presentation pack was sold at RM3.50. The envelope of the presentation pack featured the cup and an exterior view of the stadium.

The first day cover, sold at 30s., featured players crossing sticks.

The first day postmark included the head of a hockey stick.



No.	S.G.	I.S.C.		Mint	Used
02.1.1	1049	895	30s. Wmk. U. P.13.6 x 13.8.	<input type="checkbox"/>	<input type="checkbox"/>
02.1.2	1050	896	50s. Wmk. U. P.13.6 x 13.8.	<input type="checkbox"/>	<input type="checkbox"/>
02.1.3	1051	897	RM1. Wmk. U. P.13.6 x 13.8.	<input type="checkbox"/>	<input type="checkbox"/>
02.1.3a	1051a	-	- Wmk. I. P.14.3.	<input type="checkbox"/>	<input type="checkbox"/>
02.1.4	MS1052	MC-283M	RM3 miniature sheet. Perf. Wmk. SD.	<input type="checkbox"/>	<input type="checkbox"/>
02.1.5	MS1052a	MC-283MI	- Imperforate. Wmk. SD.	<input type="checkbox"/>	<input type="checkbox"/>

No.	S.G.	I.S.C.		Mint	Used
02.1.6	-	MFDC-283	First day cover (1-3).	<input type="checkbox"/>	<input type="checkbox"/>
02.1.7	-	MFDC-283M	- (4).	-	<input type="checkbox"/>
02.1.8	-	MFDC-283MI	- (5).	-	<input type="checkbox"/>
02.1.9	-	MPP-283	Presentation pack (1-3).	<input type="checkbox"/>	<input type="checkbox"/>

5 February 2002.

Joint Issue with China - Rare Flowers (I).



Designed by Hazel Design (30s. and RM1(B)) or Zhang Guizheng (RM1(A)), this issue comprised three counter sheets and a miniature sheet.

#### Counter sheets:

There were three 30mm x 41mm stamps, a 30s. and two RM1, incorporating a star and crescent emblem and showing:

30s., RM1 (B): Guiana Cannonball Tree (*Bunga Peluru Meriam*, *Couroupita guianensis* Aubl.);

RM1 (A): Golden Camellia (*Camellia nitidissima*).

They were printed in sheets of 20 by Secura Security Printing Sdn. Bhd. using off-set lithography.

The 30c. sheet was 5 x 4 with a panel of five stamp size labels at the bottom containing the issue title in Bahasa and English with larger illustrations of the Camellia and Couroupita. The bottom selvedge contained (left to right), "Joint Issue Malaysia China" in Bahasa and Chinese, Couroupita line drawing, Pos Malaysia emblem, Couroupita colour illustration, Couroupita designer.

The RM1 sheets had similar bottom panels to the 30s., but the sheet format was 4 x 5 with a narrow central vertical gutter margin containing the issue title and small illustrations. There were two sheet formats:

Sheet A: This had red borders, red being a Chinese good luck symbol, and four rows of RM1 (A) above a single row containing se-tenant pairs with RM1 (A) in positions R5/1 and R5/4 and RM1 (B) in R5/2-3.

Sheet B: This had white borders and four rows of RM1 (B) above a single row containing se-tenant pairs with RM1 (A) in positions R5/2-3 and RM1 (B) in R5/1 and R5/4.

The bottom selvedge in both cases contains (left to right), Camellia designer, Camellia line drawing, Pos Malaysia emblem, Couroupita line drawing (also appeared above R1/1), Couroupita designer. Printing colours and plates were not recorded.

The phosphor-coated paper gave a greenish-white fluorescent reaction and a yellow-green after-glow under ultra-violet light. It had a new watermark "Multiple POST OFFICE" sideways reading down, but otherwise resembles the SPM-watermarked Tullis-Russell paper latterly used. The comb perforations measured 12.8. All margins were perforated through on the RM1 sheet (top not confirmed on 30s.).

#### Miniature sheet:

The 108mm x 78mm miniature sheet showed a mixture of foliage with two *Schima brevifolia* flowers to form two RM2 stamps, one 41mm x 30mm (A) and the other 30mm x 41mm (B). The sheets were numbered at the bottom left (highest seen 098183). Each stamp in the miniature sheet was perforated separately as registration varied between the two sets of perforations. The paper was as for the counter sheets.

#### First day facilities:

The presentation pack was sold at RM4. The envelope of the presentation pack featured *Schima brevifolia*.

The first day cover, sold at 30s., featured the Cannonball tree.

The first day postmark included Cannonball tree.

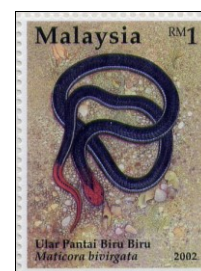


A joint cover produced by Pos Malaysia, bearing the issues of China and Malaysia and incorporating the flags of both nations, was sold by Malaysia at RM6.

No.	S.G.	I.S.C.		Mint	Used
02.2.1	1053	898	30s.	<input type="checkbox"/>	<input type="checkbox"/>
02.2.2	1054	900	RM1 (A).	<input type="checkbox"/>	<input type="checkbox"/>
02.2.3	1055	899	RM1 (B).	<input type="checkbox"/>	<input type="checkbox"/>
02.2.4	1054a	899	Se-tenant pair (2-3).	<input type="checkbox"/>	<input type="checkbox"/>
02.2.5	-	-	RM2 (A). (from m/s).	<input type="checkbox"/>	<input type="checkbox"/>
02.2.6	-	-	RM2 (B). (from m/s).	<input type="checkbox"/>	<input type="checkbox"/>
02.2.7	MS1056	MC-284	RM4 miniature sheet.	<input type="checkbox"/>	<input type="checkbox"/>
02.2.8	-	MFDC-284	First day cover (1-3).	<input type="checkbox"/>	<input type="checkbox"/>
02.2.9	-	MFDC-284M	- (6).	-	<input type="checkbox"/>
02.2.10	-	MFDC-284A	Joint first day cover.	<input type="checkbox"/>	<input type="checkbox"/>
02.2.11	-	MPP-284	Presentation pack (1-3).	<input type="checkbox"/>	<input type="checkbox"/>

9 March 2002.

Snakes.



Designed by Mohd Khir Ab. Latip of Chakra Creative, this issue comprised three counter sheets and a miniature sheet.

#### Counter sheets:

The four 28mm x 38mm stamps showed.

30s.(A): Reticulated or Regal Python (Ular Sawa Batik, *Python reticulatus*);

30s.(B): Royal Tree Snake (Ular Royal Tree, *Gonyophis margaritatus*);

50s.: Malayan Krait (Ular Katang Tebu, *Bungarus candidus*);

RM1: Blue Malaysian Coral Snake (Ular Pantai Biru-biru, *Maticora bivirgata*).

They were printed in sheets of 20 (5 x 4) by Percetakan Keselamatan Nasional using standard four-colour off-set lithography. The bottom of the sheet was formed by five stamp-sized labels representing a forest environment appropriate for the snake in question. The selvage had an overall snake-skin pattern in pale blue. Sheet markings included the issue title at the top, Pos Malaysia emblem at the centre of the bottom margin, plate numbers 1A (x4) below columns 1 and 5, colour dots (x4) at each end of the label row. There were also line drawings based on the stamp designs, including the RM2 (A) design above R1/4, 30c. (B) opposite R2/5, 50s. opposite R4/1, RM1 opposite R3/1, 30s.(A) opposite R3/5 and an unadopted design for a snake in a tree opposite R4/5. The phosphor-coated paper gave a greenish-white fluorescent reaction and a yellow-green after-glow under ultra-violet light. The paper had watermark Multiple SPM sideways reading down. The comb perforations measured 14.3 (all - normal except 50s.) or 13.6 x 13.8 (except 30s.(B) - normal for 50s.). Margins were perforated through (14.3: left right, bottom, 13.6 x 13.8: left, bottom) or imperforate (14.3: top, 13.6 x 13.8: right); the 13.6 x 13.8 top margin was not recorded.

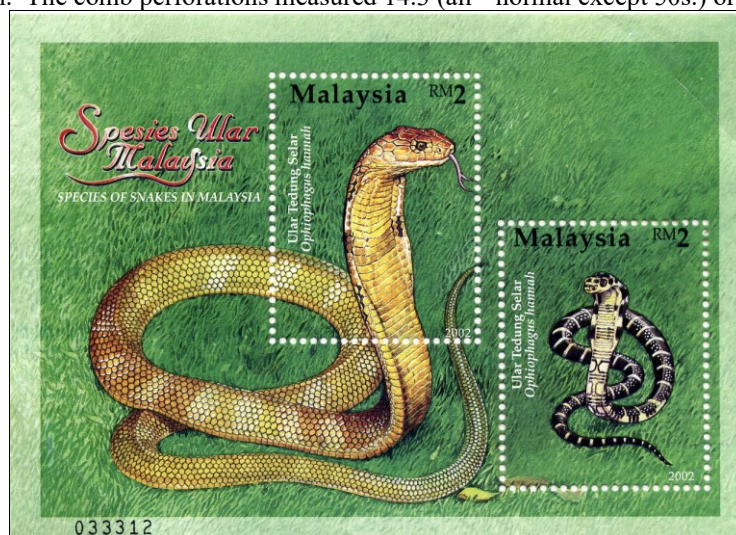
#### Miniature sheet:

The 108mm x 78mm miniature sheet contained two 30mm x 39mm RM2 stamps showing:

RM2(A): King Cobra (adult) (Ular Tedung Selar, *Ophiophagus hannah*);

RM2(B): King Cobra (juvenile).

The miniature sheet was perforated 13.4, and was also sold imperforate. The paper was as for the counter sheets. Miniature sheets were numbered at bottom left (highest seen 048148 perforated, 025572 imperforate).



**First day facilities:**

The presentation pack was sold at RM3.50. The envelope of the presentation pack featured a King Cobra. The first day cover, sold at 30s., featured a King Cobra.

The first day postmark included a Cobra's head.

No.	S.G.	I.S.C.		Mint	Used
02.3.1	1058	902	30s.(A) P.14.3.	<input type="checkbox"/>	<input type="checkbox"/>
02.3.1a	1058a	-	- P.13.6 x 13.8.	<input type="checkbox"/>	<input type="checkbox"/>
02.3.2	1057	901	30s.(B) P.14.3.	<input type="checkbox"/>	<input type="checkbox"/>
02.3.3	1059	-	50s. P.14.3.	<input type="checkbox"/>	<input type="checkbox"/>
02.3.3a	1059a	903	- P.13.6 x 13.8.	<input type="checkbox"/>	<input type="checkbox"/>
02.3.4	1060	904	RM1 P.14.3.	<input type="checkbox"/>	<input type="checkbox"/>
02.3.4a	1060a	-	- P.13.6 x 13.8.	<input type="checkbox"/>	<input type="checkbox"/>
02.3.5	-	-	RM2 (A) (from m/s) P.13.4.	<input type="checkbox"/>	<input type="checkbox"/>
02.3.5a	-	-	- Imperforate.	<input type="checkbox"/>	<input type="checkbox"/>
02.3.6	-	-	RM2 (B) (from m/s) P.13.4.	<input type="checkbox"/>	<input type="checkbox"/>
02.3.6a	-	-	- Imperforate.	<input type="checkbox"/>	<input type="checkbox"/>
02.3.7	MS1061	MC-285M	RM4 miniature sheet (5-6).	<input type="checkbox"/>	<input type="checkbox"/>
02.3.7a	MS1061a	MC-285MI	- (5a-6a).	<input type="checkbox"/>	<input type="checkbox"/>
02.3.8	-	-	First day cover - (1-4).	<input type="checkbox"/>	<input type="checkbox"/>
02.3.8a	-	-	- (1, 2, 3a, 4a).	-	<input type="checkbox"/>
02.3.8b	-	MFDC-285	- (1, 2, 3a, 4).	-	<input type="checkbox"/>
02.3.9	-	MFDC-285M	- (7).	-	<input type="checkbox"/>
02.3.9a	-	MFDC-285MI	- (7a).	-	<input type="checkbox"/>
02.3.10	-	MPP-285	Presentation pack (1-4).	<input type="checkbox"/>	<input type="checkbox"/>

**13 April 2002.****Kuala Lumpur Sentral Station and Express Rail Link.**

A new Kuala Lumpur Sentral station and commercial development opened on 16 April 2001 on the site of the former Brickfields railway locomotive sheds to provide interchange between main line, suburban and urban railways. The former Kuala Lumpur station remained open for suburban services. The opening of the new Kuala Lumpur International Airport (KLIA) in 1998 was accompanied by a project to build a dedicated, 57km, double track, standard gauge (nominally 1435mm, as opposed to the normal Malayan 1000mm, between rail heads), electrified branch line to the airport. This was the first example of a main line service being provided by a company other than Keretapi Tanah Melayu Berhad. Express Rail Link Sdn. Bhd. was a private sector company owned 60% by Lembaga Tabung Haji (Pilgrimage Board) and 40% by YTL Corp., a construction and property conglomerate. Construction, operation and maintenance of the line was contracted to a consortium led by Siemens of Germany. The service links Kuala Lumpur Sentral with KLIA, with three intermediate stations at Bandar Tasik Selatan, Putrajaya and Salak Tinggi. Twelve Siemens Desiro 4-car, 160km/h, air-conditioned, electric multiple unit trains were ordered, eight to luxury "KLIA express" specification to provide non-stop services and four more basic "KLIA transit" units for all-stations services. The service opened on 19 April 2002 and ran 20 hours per day, 365 days per year. The Express service ran every 15 minutes with 28 minutes journey time. The Transit service ran every 30 minutes with 36 minutes journey time. Passengers for the two services were fully-segregated at the termini. Kuala Lumpur Sentral was registered as an airport, allowing passengers and their baggage to be checked-in and out there instead of having to wait until they arrived at KLIA.

Designed by Reign Associates, the issue comprised two counter sheets, one with se-tenant stamps, and two miniature sheets.

**Counter sheets:**

The 40mm x 30mm stamps showed:

30s.: Kuala Lumpur Sentral station with a PUTRA train;

50s.(A): KLIA express unit at Kuala Lumpur Sentral;

50s.(B): KLIA express unit at KLIA.

The trains bore both magenta "KLIA express" and green "ekspres KLIA" fleetnames. The 50s. stamp showed the Bahasa version, whilst the 30s. sheet, miniature sheet and covers showed the English version.

The stamps were printed in sheets of 20 (4 x 5) by Percetakan Keselamatan Nasional using standard four-colour offset lithography. The bottom of each sheet comprised four stamp-sized labels, those on the 30s. showing a line-up similarly to that on a miniature sheet, while those on the 50s. showed a side elevation of an express unit. Sheet

markings included 1A(x4) below columns 1 and 4 and colour dots opposite rows 1 and 5. The phosphor-coated paper gave a greenish-white fluorescent reaction and a yellow-green after-glow under ultra-violet light. The paper had watermark Multiple SPM sideways reading down. The comb perforations measured 12.1.

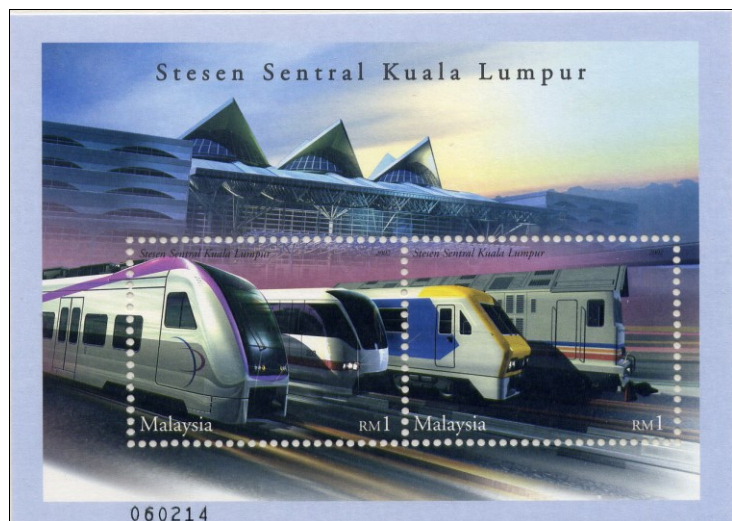
#### Miniature sheet:

There were two 106mm x 76mm miniature sheets. Sheet (A) had two 40mm x 30mm RM1 stamps showing a line-up of trains at Kuala Lumpur Sentral, (left to right)

RM1 (A): KLIA express unit, PUTRA unit 208;

RM1 (B): KTMB Komuter Class 82 electric multiple unit train and Class 24 main line diesel locomotive.

The miniature sheet was perforated 12.5 x 12.1/12.7/12.7. Sheets were numbered - highest seen 079448.



Miniature sheet (B) contained a single 40mm x 30mm RM2 stamp showing an express unit at the intermediate Salak Tinggi station.

The miniature sheet was perforated 12.5 x 12.1/12.7. Sheets were numbered - highest seen 078775.

Paper for both miniature sheets was as for the counter sheets.

#### First day facilities:

The presentation pack was sold at RM3. The envelope of the presentation pack featured Kuala Lumpur Sentral and half an express unit.

The first day cover, sold at 30s., featured Kuala Lumpur Sentral and an express unit. Covers were numbered in a series of 80,000.

The first day postmark included an ERL train.



#### Private maximum card:

MSG member C Nagarajah produced maximum cards for the 50s. stamps. They used alternative designs for the respective stamps supplied by Reign Associates.

No.	S.G.	I.S.C.		Mint	Used
02.4.1	1062	905	30s.	<input type="checkbox"/>	<input type="checkbox"/>
02.4.2	1063	906	50s.(A).	<input type="checkbox"/>	<input type="checkbox"/>
02.4.3	1064	907	50s.(B).	<input type="checkbox"/>	<input type="checkbox"/>
02.4.4	-	-	RM1 (A) (from m/s A).	<input type="checkbox"/>	<input type="checkbox"/>
02.4.5	-	-	RM1 (B) (from m/s A).	<input type="checkbox"/>	<input type="checkbox"/>
02.4.6	MS1065a	MC-286M	Miniature sheet (A).	<input type="checkbox"/>	<input type="checkbox"/>
02.4.7	MS1065b	-	Miniature sheet (B).	<input type="checkbox"/>	<input type="checkbox"/>
02.4.8	-	MFDC-286	First day cover (1-3).	<input type="checkbox"/>	<input type="checkbox"/>
02.4.9	-	MFDC-286M	- (6).	-	<input type="checkbox"/>
02.4.10	-	-	- (7).	-	<input type="checkbox"/>
02.4.11	-	MPP-286	Presentation pack (1-3).	<input type="checkbox"/>	<input type="checkbox"/>

2002.

## Postcard - Star Crossword (V).



**BUMPER CROSSWORD PUZZLE NO:**  (please fill in) **Note:** Use BLACK BALLPOINT PEN only

**N° B 979952**

Name (as in NRIC):

NRIC No (new):

Address:

Postcode:  State:

Tel No. (Off):

Tel No. (Home):

Tel No. (Mobile):

E-mail Address:

Most frequently read sections of *The Star* (please tick ✓ your top 5 choices)

☐ News ☐ Business ☐ Sports ☐ Star Memo ☐ Section 2 ☐ In.Tech

☐ Clove ☐ AudioFile ☐ Maritime ☐ Youth 2 ☐ Education ☐ Tech.Plus

How do you get your copy of *The Star*? (please tick ✓)

☐ Home Subscription ☐ Newsstand ☐ Office

**PASSWORDS:** (applicable for Puzzles No. 11 - 25)

Monday:

Tuesday:

Wednesday:

Thursday:

Date:       Signature:

Pos Malaysia issued another in the series of postal stationery cards dedicated to responses to the annual crossword competition run by The Star newspaper of Kuala Lumpur. The glossy front of the 210mm x 147mm pre-addressed white card bore at top left the "Star Rewards Bumper Crossword Puzzle 2002" emblem, "The Star 30<sup>th</sup> Anniversary A Celebration 1971-2001" emblem and Pos Malaysia emblems. The Poslaju emblem appeared at bottom left. At top right, the 30s. "stamp" was a simple box headed "MALAYSIA 30sen" containing a diagonal 27mm x 20mm reproduction of the 30s. Kuala Lumpur Sentral station stamp. The back was matt with provision for attachment of four daily answer forms and for writing-in personal details. Details of the designer, printer and date of issue were not recorded.

No.	S.G.	I.S.C.		Mint	Used
02.5.1	-	-	Postcard.	<input type="checkbox"/>	<input type="checkbox"/>

24 April 2002.

17<sup>th</sup> World Orchid Conference.

The 17<sup>th</sup> World Orchid Conference was held from 24 April to 2 May 2002 at the Malaysian International Exhibition and Convention Centre in Shah Alam. The 4<sup>th</sup> Conference was marked by an issue in 1963 (see issue 63.6).

Designed by Reign Associates, this issue comprised three counter sheets (two having se-tenant stamps) and a miniature sheet.

#### Counter sheets:

The 30s. and RM1 sheets contained se-tenant pairs of stamps. All counter sheet stamps were 30mm x 41mm and showed:

30s.(A): Rat-tailed orchid (*Paraphalaenopsis labukensis*);

30s.(B): The Beautiful Renanthera (*Renanthera bella*);

50s.: Sander's Slipper Orchid (*Paphiopedilum sanderianum*);

RM1 (A): Black Orchid (Orkid Hitam, *Coelogyne pandurata*);

RM1 (B): Butterfly or Moon Orchid (Anggerik bulan, *Phalaenopsis amabilis*).

They were printed in sheets of 20 (4 x 5) by Secura using standard four-colour off-set lithography. On the se-tenant sheets, type A occupied columns 1 and 3 and type B columns 2 and 4. Four stamp-size labels formed a sixth row on the sheet showing a variety of orchids and the title of the issue in magenta (30s.), magenta and blue (50s.) or full colour (RM1). Sheet markings included POS Malaysia emblem above columns 2 and 3, plate numbers 1A (x4) above columns 1 and 4, colour dots opposite rows 1 and 5 in the shape of four-leaf clover (30s.), four-pointed star (50s.) or 5-petalled flower (RM1).

The phosphor-coated paper used for the counter sheets gave a greenish-white fluorescent reaction and a yellow-green after-glow under ultra-violet light. It had watermark Multiple POST OFFICE sideways reading down. The comb perforations measured 12.8. Bottom, left and right margins were perforated through; the top margin was not recorded.

#### Miniature sheet:

The miniature sheet appeared in both perforated 13.0 and imperforate versions and showed Merrill's Cleisocentron (*Cleisocentron merillianum*). It measured 71mm x 105mm with a 45mm x 40mm RM5 stamp. The sheets were numbered. The highest perforated sheet seen was 096660. Imperforate sheets were seen numbered up to 39638. The paper used had no discernible watermark, pinkish gum and only exhibited a low blue fluorescence without after-glow.

#### First day facilities:

The presentation pack was sold at RM5. The envelope of the presentation pack featured the Lundu Orchid (*Phalaenopsis violacea*).

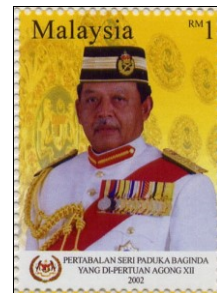
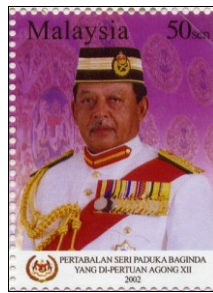
The first day cover, sold at 30s., featured Rothschild's Slipper Orchid (*Paphiopedilum rothschildianum*).

The first day postmark included *Cleisocentron merillianum*.



No.	S.G.	I.S.C.		Mint	Used
02.6.1	1066	908	30s.(A).	<input type="checkbox"/>	<input type="checkbox"/>
02.6.2	1067	909	30s.(B).	<input type="checkbox"/>	<input type="checkbox"/>
02.6.3	-	-	Se-tenant pair (1-2).	<input type="checkbox"/>	<input type="checkbox"/>
02.6.4	1068	910	50s.	<input type="checkbox"/>	<input type="checkbox"/>
02.6.5	1068	911	RM1 (A).	<input type="checkbox"/>	<input type="checkbox"/>
02.6.6	1070	912	RM1 (B).	<input type="checkbox"/>	<input type="checkbox"/>
02.6.7	-	-	Se-tenant pair (5-6).	<input type="checkbox"/>	<input type="checkbox"/>
02.6.8	MS1071	MC-287M	RM5 m/s. Perf.	<input type="checkbox"/>	<input type="checkbox"/>
02.6.9	MS1071a	MC-287MI	- Imperforate.	<input type="checkbox"/>	<input type="checkbox"/>
02.6.10	-	MFDC-287	First day cover (3, 4, 7).	<input type="checkbox"/>	<input type="checkbox"/>
02.6.11	-	MFDC-287M	- (8).	-	<input type="checkbox"/>
02.6.12	-	MFDC-287MI	- (9).	-	<input type="checkbox"/>
02.6.13	-	MPP-287	Presentation pack (3, 4, 7).	<input type="checkbox"/>	<input type="checkbox"/>

25 April 2002.

Installation of 12<sup>th</sup> King.

Raja Syed Sirajuddin was installed as King on 25 April 2002 following the death of the previous incumbent.

This issue comprised three counter sheets designed by Raja Zahabuddin bin Raja Yaacob and a souvenir sheetlet designed by Mohammed Jun Idris of Hazel Design.

### Counter sheets:

The three 30mm x 41mm stamps (30s., 50s., RM1 (A)) had a common design showing a three-quarter face portrait of the Raja on a background of the Malaysian coat of arms. They were originally printed in sheets of 20 (4 x 5) by Secura using standard four-colour off-set lithography. There were no plate numbers or colour dots. Other sheet markings included the issue title in the top margin, with the mace head above column 5. The five columns of the bottom margin contained (left to right) mace heads, Designer, Pos Malaysia emblem, "Commemorative Issue of Postage Stamps" and sceptres. At the bottom of the sheet, there were five stamp-size labels making up a composite design including the issue title and the Royal Kris. The phosphor-coated paper gave a greenish-white fluorescent reaction and a yellow-green after-glow under ultra-violet light. The paper had watermark Multiple POST OFFICE upright. The comb perforations measured 12.8. The left margin was imperforate on all values, the rest perforated through.

### Reprint:

The 30s. subsequently appeared in sheets of 25 (5 x 5) with plain margins. The only sheet markings were four colour dots to the left of R1/1 and to the right of R5/5 and 1A (x4) to the right of R1/5 and to the left of R5/1. The stamps were less intensely coloured. Paper, perforation and watermark were unchanged. The top margin was imperforate. The rest were perforated through. It is possible that this was a process sheet produced to make-up first day covers and subsequently released to the public,

### Sheetlet:



There was a "special presentation pack", sold for RM12, which contained a 251mm x 202mm sheetlet of twelve individual 30mm x 41mm RM1 stamps, each showing a portrait of one of the past kings in an oval frame:

RM1 (B): Tuanku Syed Sirajuddin;

RM1 (C): Tuanku Abdul Rahman;

RM1 (D): Sultan Hisamuddin Alam Shah;

RM1 (E): Tuanku Syed Putra;

RM1 (F): Tuanku Ismail Nasiruddin Shah;

RM1 (G): Tuanku Abdul Halim Mu'adzam Shah;

RM1 (H): Tuanku Yahya Petra;

RM1 (I): Sultan Ahmad Shah;

RM1 (J): Sultan Iskandar;

RM1 (K): Sultan Azlan Muhibbuddin Shah;

RM1 (L): Tuanku Ja'afar;

RM1 (M): Sultan Salahuddin.

They were printed by Secura using five-colour off-set lithography. Paper and perforation were as for the counter sheets but the watermark was normally sideways reading down. The sheets were numbered (02419-34913 seen). The sheets also exist watermark upright (06049 seen).

### First day facilities:

The presentation pack was sold at RM3.50. The envelope of the presentation pack featured the heads of the Royal Maces.

The first day cover, sold at 30s., featured the Royal Kris and coat of arms. It was numbered in a series of 80,000.

The first day postmark included the head of the Sceptre of the World.

No.	S.G.	I.S.C.		Mint	Used
02.7.1	1072	913	30s.	<input type="checkbox"/>	<input type="checkbox"/>
02.7.2	1073	914	50s.	<input type="checkbox"/>	<input type="checkbox"/>
02.7.3	1074	915	RM1 (A).	<input type="checkbox"/>	<input type="checkbox"/>
02.7.4	-	MFDC-288	First day cover (1-3).	<input type="checkbox"/>	<input type="checkbox"/>
02.7.5	-	MPP-288	Presentation pack (1-3).	<input type="checkbox"/>	<input type="checkbox"/>
02.7.6	-	-	RM1 (B). Wmk. SD.	<input type="checkbox"/>	<input type="checkbox"/>
02.7.6a	-	-	- Wmk. U.	<input type="checkbox"/>	<input type="checkbox"/>
02.7.7	-	-	RM1 (C). Wmk. SD.	<input type="checkbox"/>	<input type="checkbox"/>
02.7.7a	-	-	- Wmk. U.	<input type="checkbox"/>	<input type="checkbox"/>
02.7.8	-	-	RM1 (D). Wmk. SD.	<input type="checkbox"/>	<input type="checkbox"/>
02.7.8a	-	-	- Wmk. U.	<input type="checkbox"/>	<input type="checkbox"/>
02.7.9	-	-	RM1 (E). Wmk. SD.	<input type="checkbox"/>	<input type="checkbox"/>
02.7.9a	-	-	- Wmk. U.	<input type="checkbox"/>	<input type="checkbox"/>
02.7.10	-	-	RM1 (F). Wmk. SD.	<input type="checkbox"/>	<input type="checkbox"/>
02.7.10a	-	-	- Wmk. U.	<input type="checkbox"/>	<input type="checkbox"/>
02.7.11	-	-	RM1 (G). Wmk. SD.	<input type="checkbox"/>	<input type="checkbox"/>
02.7.11a	-	-	- Wmk. U.	<input type="checkbox"/>	<input type="checkbox"/>
02.7.12	-	-	RM1 (H). Wmk. SD.	<input type="checkbox"/>	<input type="checkbox"/>
02.7.12a	-	-	- Wmk. U.	<input type="checkbox"/>	<input type="checkbox"/>
02.7.13	-	-	RM1 (I). Wmk. SD.	<input type="checkbox"/>	<input type="checkbox"/>
02.7.13a	-	-	- Wmk. U.	<input type="checkbox"/>	<input type="checkbox"/>
02.7.14	-	-	RM1 (J). Wmk. SD.	<input type="checkbox"/>	<input type="checkbox"/>
02.7.14a	-	-	- Wmk. U.	<input type="checkbox"/>	<input type="checkbox"/>
02.7.15	-	-	RM1 (K). Wmk. SD.	<input type="checkbox"/>	<input type="checkbox"/>
02.7.15a	-	-	- Wmk. U.	<input type="checkbox"/>	<input type="checkbox"/>
02.7.16	-	-	RM1 (L). Wmk. SD.	<input type="checkbox"/>	<input type="checkbox"/>
02.7.16a	-	-	- Wmk. U.	<input type="checkbox"/>	<input type="checkbox"/>
02.7.17	-	-	RM1 (M). Wmk. SD.	<input type="checkbox"/>	<input type="checkbox"/>
02.7.17a	-	-	- Wmk. U.	<input type="checkbox"/>	<input type="checkbox"/>
02.7.18	-	-	RM12 sheetlet (6-17).	<input type="checkbox"/>	<input type="checkbox"/>
02.7.18a	MS1074a	-	- (6a-17a).	<input type="checkbox"/>	<input type="checkbox"/>
02.7.19	-	MC-288SH	Special presentation pack (18).	<input type="checkbox"/>	<input type="checkbox"/>
02.7.19a	-	-	- (18a).	<input type="checkbox"/>	<input type="checkbox"/>

11 May 2002.

Aquatic Plants.



Malaysia had recently promoted the many native aquatic plants for a wide variety of roles, including food (fifteen edible species), animal fodder, green manure for paddy fields, ornaments, pond oxygenation, etc.

Designed by Reign Associates Sdn. Bhd., this issue comprised three counter sheets (one with se-tenant stamps) and a miniature sheet.

### Counter sheets:

The 40mm x 30mm stamps showed:

30s.: Purple Water Trumpet (Kelada Paya, *Cryptocoryne purpurea*);

50s.: Malaysian Water lily (Kiambang Malaysia, *Barclaya kunstleri*);

RM1 (A): Water Mimosa (Kangkong Puteri, *Neptunia oleracea*);

RM1 (B): Solms (Keladi Agas, *Monochoria hastata*).

They were printed in sheets of 20 (4 x 5) by Percetakan Keselamatan Nasional using standard four-colour off-set lithography. In the RM1 sheet, design A appeared in columns 1 and 3 and B in columns 2 and 4. Sheet markings included 1A (x4) below columns 1 and 4 and colour dots to left and right of row 1 and the broad margin below row 5, issue title and Pos Malaysia emblem above and below columns 2 and 3, and designer below column 2. The phosphor-coated paper gave a greenish-white fluorescent reaction and a yellow-green after-glow under ultra-violet light. The paper had watermark Multiple SPM sideways reading down. The comb perforations measured 12.1 (30s, 50s.) or 12.5 x 12.7 (RM1). All sheet margins were decorated with enlarged images from the stamps (reversed in the case of the 30s.) and all were perforated through. The bottom margins were deeper than a stamp and the perforations on the 30s. and 50s. stopped after the height of a stamp, indicating that they were perforated vertically from the top of the sheet. The RM1 sheet had perforations extending to the bottom of the margin, the sheet being perforated from right to left.

### Miniature sheet:

The 110mm x 80mm miniature sheet showed a pond scene. It contained two stamps:

RM1 (C): Water Hyacinth (Keladi Bunting, *Eichhornia crassipes*) (30mm x 40mm);

RM2: White Water Lily (Kiambang Putih, *Nymphaea pubescens*) (40mm x 30mm).

The miniature sheets were numbered - the highest seen was 069648. The RM1 stamp was perforated 12.8/12.1 x 12.5, while the RM2 was 12.1. Each stamp was perforated separately and substantial variation of position between the perforations of the two stamps can be seen. An unusual variety occurred on the RM2, where the horizontal perforations had either 25 (Type 1) or 26 (Type 2) holes<sup>2</sup>, with the effect that the stamp changed from 39.5mm long to 41.5mm long.

The 25-hole variety was recorded on low numbered sheets (range 003639-008796 noted) and the 26 on high numbered ones (range 049416-058406 noted), but 25 on 054781 and then on 058425, then 26 on range 059305-069648 suggesting simultaneous use of two perforators. The 26-hole version appeared to be the more common.



Left: 26 holes. Above: 25 holes.

### First day facilities:

The presentation pack was sold at RM4. The envelope of the presentation pack featured a pink Lotus (*Nelumbo nucifera*) flower.

The first day cover, sold at 30s., featured a white Lotus flower. The covers were numbered in a series of 120,000.

The first day postmark included a Lotus flower.

No.	S.G.	I.S.C.		Mint	Used
02.8.1	1075	916	30s.	<input type="checkbox"/>	<input type="checkbox"/>
02.8.2	1076	917	50s.	<input type="checkbox"/>	<input type="checkbox"/>
02.8.3	1077	918	RM1 (A).	<input type="checkbox"/>	<input type="checkbox"/>
02.8.4	1078	919	RM1 (B).	<input type="checkbox"/>	<input type="checkbox"/>
02.8.5	1077a	-	Se-tenant pair (3-4).	<input type="checkbox"/>	<input type="checkbox"/>
02.8.6	-	-	RM1 (C) (from 8 or 8a).	<input type="checkbox"/>	<input type="checkbox"/>
02.8.7	-	-	RM2 Type 1 (from 8).	<input type="checkbox"/>	<input type="checkbox"/>
02.8.7a	footnote	-	- Type 2 (from 8a).	<input type="checkbox"/>	<input type="checkbox"/>
02.8.8	MS1079	MC-289M	RM3 miniature sheet (6-7).	<input type="checkbox"/>	<input type="checkbox"/>

No.	S.G.	I.S.C.		Mint	Used
02.8.8a	-	-	- (6-7a).	<input type="checkbox"/>	<input type="checkbox"/>
02.8.9	-	MFDC-289	First day cover (1, 2, 5).	<input type="checkbox"/>	<input type="checkbox"/>
02.8.10	-	MFDC-289M	- (8).	-	<input type="checkbox"/>
02.8.10a	-	-	- (8a).	-	<input type="checkbox"/>
02.8.11	-	MPP-289	Presentation pack (1, 2, 5).	<input type="checkbox"/>	<input type="checkbox"/>

27 June 2002.

Joint Issue with Singapore - Tropical Birds.



This issue was originally planned for 20 June. It was awarded the “Best Joint Issue 2002” by the International Philatelic Society of Joint Stamp Issue Collectors.

Designed by Teh Yew Kiang for Pos Malaysia and Varna Art & Design for Singapore Post, the issue comprised two counter sheets and a miniature sheet.

#### Counter sheets:

The two pairs of 30mm x 40mm showed the following birds on their respective favourite plants:

30s.(A): White-bellied Woodpecker (Belatuk Gajah, *Dryocopus javensis*);

30s.(B): Black-naped Oriole (Dendang Selayang, *Oriolus chinensis*);

RM1 (A): Red-throated Sunbird (Kelicap Pinang, *Anthreptes rhodolaema*);

RM1 (B): Asian Fairy Bluebird (Dendang Gajah, *Irena puella*).

The stamps were printed in sheets of 20 (4 x 5) by Percetakan Keselamatan Nasional using standard 4-colour off-set lithography. A stamp-sized gutter divided the two columns of se-tenant pairs. The gutter, top margin and top row margins were occupied by a forest pattern with birds. Colour dots appeared in both margins opposite rows 1 and 5. The issue title appeared in the top margin, birds opposite R3, R4/1, R4/4 and R5/4 on 30s. and R4/4 (and other unrecorded positions) on RM1, 1A (x4) below R5/1 and R5/4, Pos Malaysia emblem below the gutter margin, and designer details below columns 2 and 3. On some, but not all, sheets, the sheet number appear to the left of R2/1 (highest seen 219096). The phosphor-coated paper gave a greenish-white fluorescent reaction and a yellow-green after-glow under ultra-violet light. The paper had watermark Multiple SPM sideways reading down. The comb perforations measured 12.7 x 12.5. All margins were perforated through, the perforated moving from top to bottom.



20-set Format A

**Miniature sheet:**

The 100mm x 70mm miniature sheets, containing a 60mm x 40mm RM5 stamp, showed Orange-bellied Flowerpecker (Sepah Puteri Bukit, *Dicaeum trigonostigma*) on a Torch Ginger flower. They were numbered (highest seen 079171). The stamp was perforated 12.8/12.1 x 12.5.

It was not released in imperforate form, but a sheet was reported offered on the market in 2009. The status of this is uncertain. It has been suggested that it either may have been bogus or may have been an unauthorised leak from the printers.

**Essays in the public domain:**

A sheet of stamp-sized essays, said to be for a 2007 issue but possibly for this issue, appeared on the open market in 2008.<sup>3</sup> Headed "KOLEKSI SETEM BURUNG / BURUNG DELATUK" in a wide top margin, the sheet had five rows of four *tête-bêche* triangular stamps showing a kingfisher with a red head and black body. Sheet markings were 1A (x4) at left and right of the top and bottom margins, colour dots (x4) to left and right of rows 1 and 5, Pos Malaysia emblem below R5/3. The margins were decorated, the top margin being imperforate and the others perforated through. The stamps showed nul value "RM0".

**First day facilities:**

The presentation pack was sold at RM4. The envelope of the presentation pack featured *Dryocopus javensis*. The 219mm x 110mm first day cover, sold at 30s., featured a bird landing to feed two fledglings. They were numbered in a series of 120,000.

The first day postmark included a feather. A first day cover is known serviced at Alor Star with only the Singapore stamps.

15,000 213mm x 140mm joint covers were produced showing birds on a nest with a world map and the flags of Malaysia and Singapore to be serviced with both sets of stamps and respective postmarks.

No.	S.G.	I.S.C.		Mint	Used
02.9.1	1080	920	30s.(A).	<input type="checkbox"/>	<input type="checkbox"/>
02.9.2	1081	921	30s.(B).	<input type="checkbox"/>	<input type="checkbox"/>
02.9.3	1080a	-	- Se-tenant pair (1-2).	<input type="checkbox"/>	<input type="checkbox"/>
02.9.4	1082	922	RM1 (A).	<input type="checkbox"/>	<input type="checkbox"/>
02.9.5	1083	923	RM1 (B).	<input type="checkbox"/>	<input type="checkbox"/>
02.9.6	1082a	-	- Se-tenant pair (4-5).	<input type="checkbox"/>	<input type="checkbox"/>
02.9.7	MS1084	MC-290M	RM5 miniature sheet.	<input type="checkbox"/>	<input type="checkbox"/>
02.9.8	-	MFDC-290	First day cover (3, 6).	<input type="checkbox"/>	<input type="checkbox"/>
02.9.9	-	MFDC-290M	- (7).	-	<input type="checkbox"/>
02.9.10	-	-	Joint Malaysia/Singapore first day cover.	<input type="checkbox"/>	<input type="checkbox"/>
02.9.11	-	-	Presentation pack (3, 6)..	<input type="checkbox"/>	<input type="checkbox"/>

Note: Covers are also known serviced with gutter pairs from columns 2 and 3 of the sheets.

**13 July 2002.****Islands and Beaches of Malaysia (1).**

Originally entitled "Tourist Destination", this issue showed maps and shore views of various islands.

Designed by Reign Associates, this issue comprised three counter sheets with se-tenant pairs of stamps and a miniature sheet.

#### Counter sheets:

The 41mm x 30mm stamps showed:

30s.(A): Pulau Sibü, Johore;

30s.(B): Pulau Perbentian, Trengganu;

50s.(A): Pulau Manukan, Sabah;

50s.(B): Pulau Tioman, Pahang;

RM1 (A): Pulau Singa Besar, Kedah;

RM1 (B): Pulau Pangkor, Perak.

They were printed in sheets of 20 (two panes of 10 (five pairs) with a vertical imperforate gutter margin) by Secura using standard four-colour off-set lithography. The sheets had a background of maps and shells on sand which varies between the values. There was a sawtooth-pattern border. The issue title and Pos Malaysia emblem appear at the bottom centre. The sheet number appeared at bottom left (highest seen 30s. 013050, 50s. 60175, RM1 39433). There were no colour dots or plate numbers. The



20-set Format B

phosphor-coated paper gave a blue-white fluorescent reaction and a yellow-green after-glow under ultra-violet light. The paper normally had watermark Multiple POST OFFICE upright, but all exist with inverted watermark (50s. sheet 51594 and RM1 sheet 07211 seen). The comb perforations measured 12.8. The stamps in each column were perforated from the bottom, only the top margin being perforated through.

#### Miniature sheet:

The 111mm x 79mm miniature sheet was a composite design containing two RM1 41mm x 30mm stamps showing

RM1 (C): Batu Ferringhi beach, Penang;

RM1 (D): Port Dickson beach, Negeri Sembilan.

The sheets were numbered (highest seen was 080263). The watermark was sideways reading down. Paper and perforations were as for counter sheets.

#### First day facilities:

The presentation pack was sold at RM6. The envelope of the presentation pack featured a forest clearing skyline and shells on sand.

The first day cover, sold at 30s., featured rowing boats on a beach, a compass rose and shells on sand. The covers were numbered in a series of 130,000, but the higher numbers, from 117,224 at least, were an amended design for Philakorea (see below).

The first day postmark included coconut palm, beach and mountain.

#### Philakorea cover:

Part of the cover production, numbered from 117,224 at least, was an amended design incorporating the Philakorea 2002 emblem at the foot.

These covers received an undated Philakorea emblem cachet in lieu of a postmark.



No.	S.G.	I.S.C.		Mint	Used
02.10.1	1085	924	30s.(A) Wmk. U.	<input type="checkbox"/>	<input type="checkbox"/>
02.10.1a	1085w	-	- Wmk. I.	<input type="checkbox"/>	<input type="checkbox"/>
02.10.2	1086	925	30s.(B) Wmk. U.	<input type="checkbox"/>	<input type="checkbox"/>
02.10.2a	1086w	-	- Wmk. I.	<input type="checkbox"/>	<input type="checkbox"/>
02.10.3	1085a	-	Se-tenant pair (1-2).	<input type="checkbox"/>	<input type="checkbox"/>
02.10.3a	1085wa	-	- (1a-2a).	<input type="checkbox"/>	<input type="checkbox"/>
02.10.4	1087	926	50s.(A) Wmk. U.	<input type="checkbox"/>	<input type="checkbox"/>
02.10.4a	1087w	-	- Wmk. I.	<input type="checkbox"/>	<input type="checkbox"/>
02.10.5	1088	927	50s.(B) Wmk. U.	<input type="checkbox"/>	<input type="checkbox"/>
02.10.5a	1088w	-	- Wmk. I.	<input type="checkbox"/>	<input type="checkbox"/>
02.10.6	1087a	-	Se-tenant pair (4-5).	<input type="checkbox"/>	<input type="checkbox"/>
02.10.6a	1087wa	-	- (4a-5a).	<input type="checkbox"/>	<input type="checkbox"/>
02.10.7	1089	928	RM1 (A) Wmk. U.	<input type="checkbox"/>	<input type="checkbox"/>
02.10.7a	1089w	-	- Wmk. I.	<input type="checkbox"/>	<input type="checkbox"/>
02.10.8	1090	929	RM1 (B) Wmk. U.	<input type="checkbox"/>	<input type="checkbox"/>
02.10.8a	1090w	-	- Wmk. I.	<input type="checkbox"/>	<input type="checkbox"/>
02.10.9	1089a	-	Se-tenant pair (7-8).	<input type="checkbox"/>	<input type="checkbox"/>
02.10.9a	1089wa	-	- (7a-8a).	<input type="checkbox"/>	<input type="checkbox"/>
02.10.10	-	-	RM1 (C) (from m/s).	<input type="checkbox"/>	<input type="checkbox"/>
02.10.11	-	-	RM1 (D) (from m/s).	<input type="checkbox"/>	<input type="checkbox"/>
02.10.12	MS1091	MC-291M	RM2 miniature sheet.	<input type="checkbox"/>	<input type="checkbox"/>
02.10.13	-	MFDC-291	First day cover - (3, 6, 9).	<input type="checkbox"/>	<input type="checkbox"/>
02.10.13a	-	-	- (3, 6, 9a).	<input type="checkbox"/>	<input type="checkbox"/>
02.10.14	-	MFDC-291M	- (12).	-	<input type="checkbox"/>
02.10.15	-	MPP-291	Presentation pack (3, 6, 9).	<input type="checkbox"/>	<input type="checkbox"/>
02.10.16	-	-	Philakorea first day cover - (3, 6, 9).	<input type="checkbox"/>	<input type="checkbox"/>
02.10.17	-	-	- (12).	-	<input type="checkbox"/>

9 August 2002.

Envelope - Board of Engineers Malaysia.



The Board of Engineers Malaysia (BEM) was established under the Registration of Engineers Act 1967 on 23 August 1972 to regulate the Engineering profession. This envelope marked its 30<sup>th</sup> anniversary and the contribution of professional engineers in nation building.

Designed by Hazel Design, this 215mm x 138mm pre-stamped envelope showed a satellite earth station, the Petronas Twin Towers and the KLIA buildings on a background of engineering drawings including a racing car. The 47mm x 40mm 50s. "stamp" was hexagonal (truncated triangle), to match the shape of the BEM emblem. It showed Salak Tinggi railway station, high tension electrical insulators, Penang Bridge, earth station and engineers at work on a pipeline. The printed "perforation" was 14.5. The envelopes were printed by ELPOS Print Sdn. Bhd. and sold at RM1. The envelopes were numbered (highest seen was 019944).

#### First day facilities:

The first day postmark showed the BEM emblem.

No.	S.G.	I.S.C.		Mint	Used
02.11.1	-	PE35	50s. envelope	<input type="checkbox"/>	<input type="checkbox"/>
02.11.1a	-	-	- First day postmark.	-	<input type="checkbox"/>

24 August 2002.

Malaysian Unity (I).



This issue, intended to promote racial and religious tolerance, was originally announced for 10 August.

Designed by Reign Associates, this issue comprised two counter sheets, one having se-tenant stamps, and a miniature sheet:

#### Counter sheets:

The 41mm x 30mm 30s. stamps were printed se-tenant in alternate columns in a 180mm x 210mm sheet of 20 (2 pairs x 5) and formed a composite design showing:

30s.(A): (columns 1 and 3) Four musicians playing traditional instruments (three kinds of drum and a sapih).

30s.(B): (columns 2 and 4) Five children and a woman playing what looks like a marble game.

The sheet margin showed, clockwise from top centre, woman and girl from stamp B, right-hand musician, drummer, ERL train, Proton Wira car, Pos Malaysia emblem and issue title, KLIA railway station, Penang Bridge, Petronas Twin Towers, Prime Minister's Complex at Putrajaya.

The 82mm x 30mm 50s. stamp was printed in a similar sheet, but of 10 (2 x 5), and showed seven young people of various races in different traditional costumes. The sheet margin showed, clockwise, Penang Bridge, rightmost girl from stamp, Petronas Twin Towers, Putrajaya, women and children, Pos Malaysia emblem and issue title, Proton Waja car, children, ERL train, rightmost boy, KLIA railway station, Malaysian flag.

In both cases, the sheets were numbered at the bottom right (highest seen 103695 (30s.), 43967 (50s.)). The broad bottom margin was partially perforated with stamp-size labels, but imperforate at the foot, but the rest were perforated through.

They were printed by Secura using standard four-colour off-set lithography. There were no plate numbers. The paper gave a greenish-white fluorescent reaction and a yellow-green after-glow under ultra-violet light. The paper had watermark Multiple POST OFFICE upright. The comb perforations measured 12.8.



20-set Format C

**Miniature sheet:**

The 68mm x 99mm sheet showed KLIA railway station, Petronas twin towers, Putrajaya, Penang Bridge, Proton Waja car, ERL train, Malaysian flag and various children pulling together on one end of a tug-of-war rope. The 41mm x 30mm RM2 stamp incorporates the heads of the children and was perforated 12.8. The sheet was numbered at bottom right (highest seen 097141). The sheet was watermarked sideways reading down.

**First day facilities:**

The presentation pack was sold at RM3. The envelope of the presentation pack featured men and women of various races under the Malaysian flag.

The first day cover, sold at 30s., featured two women and two children under Malaysian flag. 120,000 were printed.

The first day postmark included the flag.



No.	S.G.	I.S.C.		Mint	Used
02.12.1	1092	930	30s.(A).	<input type="checkbox"/>	<input type="checkbox"/>
02.12.2	1093	931	30s.(B).	<input type="checkbox"/>	<input type="checkbox"/>
02.12.3	1094	932	50s.	<input type="checkbox"/>	<input type="checkbox"/>
02.12.4	MS1095	MC-292M	RM2 miniature sheet.	<input type="checkbox"/>	<input type="checkbox"/>
02.12.5	-	MFDC-292	First day cover (1-3).	<input type="checkbox"/>	<input type="checkbox"/>
02.12.6	-	MFDC-292M	- (4).	-	<input type="checkbox"/>
02.12.7	-	MPP-292	Presentation pack (1-3).	<input type="checkbox"/>	<input type="checkbox"/>

17 September 2002.

Za'ba - National Scholar.



Za'ba (Zainal Abidin bin Ahmad) was born into a very religious Moslem family on 16 September 1895 at Kampung Bukit Kerdas, near Batu Kikir, Jempol, Negri Sembilan. He did not start school, at Batu Kikir Malay School, until the age of 12. He quickly moved to Linggi Malaya School and in 1915 completed his Senior Cambridge certificate, the first Malay from Negri Sembilan to do so. In 1916, he became a temporary teacher at Johor Bahru and became a writer on language, literature, religion, economy, education and politics. His writings attracted the suspicion of the authorities and his activities were curtailed. He married twice, the first time being in 1917. He worked as a lecturer at the Sultan Idris Training College before World War Two, becoming a pioneer of the introduction of Arabic and English grammatical rules into the Malay language. In 1946, he wrote the Charter of the UNMO political party, which marked the end of a brief period in politics. In 1947, he became lecturer in Malaya at the University of London, retiring in 1950. In 1953, he was appointed as Senior Lecturer in Malay studies at the Universiti Malaya, Singapore. In 1954, at the age of 59, he sat the University of London external examination and gained the degree of Master of Arts (Lower Second Class Honours). He was granted the title Pendata (Scholar) in September 1956 at the Third Malay Language and Literature Congress in Johore Bahru. He accepted the award of Pingat Mangku Negara (State Supporter's Medal) and title Tan Sri. He died on 23 October 1973. The stamp issue was originally planned for 4 September.

Designed by Hazel Design, this issue comprised two counter sheets, one having se-tenant stamps, and a miniature sheet.

**Counter sheets:**

The three 40mm x 30mm stamps showed:  
30s.: Za'ba when young with slate and rehal  
(wooden folding seat);

50s.(A): Za'ba in his 40s with a typewriter;

50s.(B): Za'ba in his 60s with his house  
"Teretak Za'ba", built on the site of his  
birthplace.

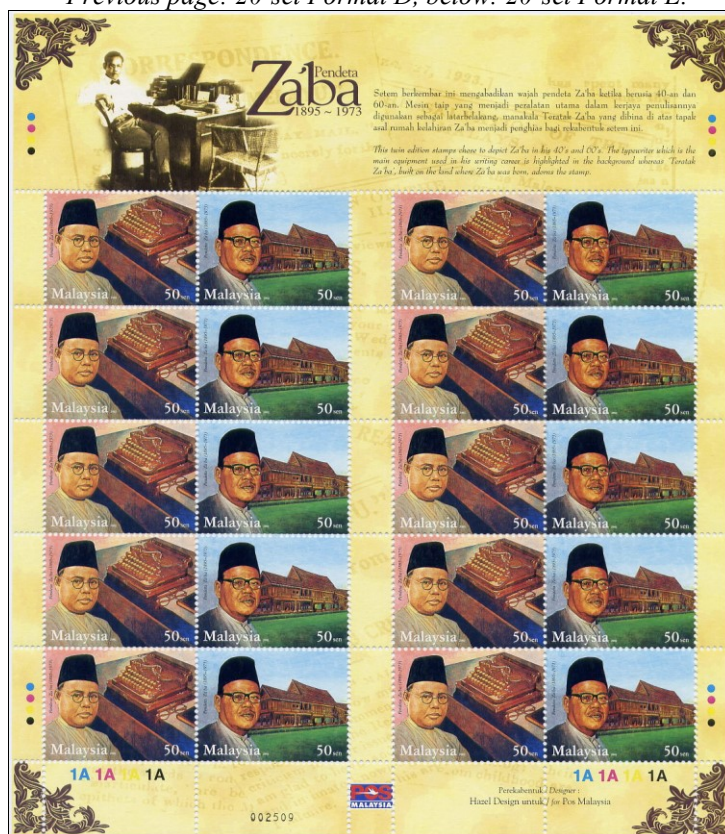
They were printed by Percetakan Keselamatan Nasional using standard four-colour off-set lithography. The phosphor-coated paper gave a greenish-white fluorescent reaction and a yellow-green after-glow under ultra-violet light. The paper had watermark Multiple SPM sideways reading down. The counter sheets of 20 measured 189mm x 217mm.

This issue introduced two new 20-set formats. The 30s. was in a pane of 20 comprising four rows of three and two rows of four. The top left of the sheet was occupied by a  $\frac{3}{4}$  height photograph of him when young. Sheets were numbered below column 2 (highest seen was 062173). Other sheet markings were floral designs in each corner, colour dots to left of R6/1 and right of R2/3 and R6/4, 1A (x4) under columns 1 and 4, Pos Malaysia emblem below the centre of the sheet and descriptive text at foot. In the complete sheet seen, the three columns of six were comb perforation 12.1, applied by a comb from top downwards the bottom margin being perforated through. The odd two stamps at bottom left were perforated by an L-shaped cutter with 13.6 at the top and 13.4 at left, again working downwards. This gave the two stamps perf. 13.6 x 13.4/12.1. However, the majority of 30s. stamps found have been 13.6 x 13.4, so another sheet version must exist with the three columns having that perforation.

The 50s. was in two panes of 10 (five tenant pairs) with a 11.5mm central gutter. The top of the sheet was occupied by a photograph of him at his desk and a descriptive text. Sheets were numbered below column 2 (highest seen was 002509). Other sheet markings were floral designs in each corner, colour dots to left and right of the text at top and R5, 1A (x4) under columns 1 and 4, Pos Malaysia emblem below the gutter and designer details below the right-hand pane.



Previous page: 20-set Format D, below: 20-set Format E.



Three versions of this sheet have been recorded:

Format A: Left pane perforated 13.6 x 13.4 and right pane perforated 12.1, the horizontal perforations in the central gutter being 12.1.<sup>4</sup>

Format B: Left pane perforated 12.1 and right pane perforated 13.6 x 13.4, the horizontal perforations in the central gutter being 13.6 x 13.4.

Format C: Both panes and central gutter perforated 13.6 x 13.4.

**Miniature sheet:**

The 100mm x 70mm sheet showed him in his library. Highest number seen was 097821. The 30mm x 40mm RM1 stamp was perforated 13.4 x 13.6. Paper and watermark were as for the counter sheets.

**First day facilities:**

The presentation pack was sold at RM3. The envelope of the presentation pack featured the house.

The first day cover, sold at 30s., featured his typewriter and a book. 100,000 were printed and numbered.

The first day postmark included a typewriter.



No.	S.G.	I.S.C.		Mint	Used
02.13.1	1096b	-	30s. P.12.1.	<input type="checkbox"/>	<input type="checkbox"/>
02.13.1a	1096a	-	- P.13.6 x 13.4/12.1.	<input type="checkbox"/>	<input type="checkbox"/>
02.13.1b	1096	933	- P.13.6 x 13.4.	<input type="checkbox"/>	<input type="checkbox"/>
02.13.2	1097b	-	50s.(A) P.12.1.	<input type="checkbox"/>	<input type="checkbox"/>
02.13.2a	1097	934	- - P.13.6 x 13.4.	<input type="checkbox"/>	<input type="checkbox"/>
02.13.3	1098b	-	50s.(B) P.12.1.	<input type="checkbox"/>	<input type="checkbox"/>
02.13.3a	1098	935	- - P.13.6 x 13.4.	<input type="checkbox"/>	<input type="checkbox"/>
02.13.4	-	-	Se-tenant pair (2-3).	<input type="checkbox"/>	<input type="checkbox"/>
02.13.4a	-	-	- (2a-3a).	<input type="checkbox"/>	<input type="checkbox"/>
02.13.5	MS1099	MC-293M	RM1 miniature sheet.	<input type="checkbox"/>	<input type="checkbox"/>
02.13.6	-	-	First day cover - (1, 2a, 3a).	<input type="checkbox"/>	<input type="checkbox"/>
02.13.6a	-	-	- (1a, 2a, 3a).	-	<input type="checkbox"/>
02.13.6b	-	-	- (1b, 2, 3).	-	<input type="checkbox"/>
02.13.6c	-	MFDC293	- (1b, 2a, 3a).	-	<input type="checkbox"/>
02.13.7	-	MFDC293M	- (5).	-	<input type="checkbox"/>
02.13.8	-	MPP-293	Presentation pack (1b, 2a, 3a).	<input type="checkbox"/>	<input type="checkbox"/>

22 October 2002.

Envelope - Institute of Islamic Understanding Malaysia.



The tenth anniversary of Institut Kefahaman Islam Malaysia (IKIM) was celebrated with a 214mm x 138mm postal stationery envelope. This government-backed body was established in Kuala Lumpur to “promote the real understanding of Islam in order to sanctify the true teachings of the religion without indulging in rhetoric or diverging from the correct path”.

Designed by Hazel Design, it was illustrated on front and back with pictures of the Institute and its work. At top right was a 32-sided (snowflake-shaped) 50s. “stamp” with simulated perforations too small to measure. It showed the IKIM emblem. The envelope was sold for RM1. The paper was fluorescent (blue-white) but there were no phosphor markings.

They were printed by Percetakan Keselamatan Nasional using off-set lithography. The envelopes were numbered on the back; the highest seen was 019036.

**First day facilities:**

The first day postmark included the initials IKIM in a pseudo-Jawi font as used in the organisation's emblem.

No.	S.G.	I.S.C.		Mint	Used
02.14.1	-	PE36	50s. envelope.	<input type="checkbox"/>	<input type="checkbox"/>
02.14.1a	-	-	- First day postmark.	-	<input type="checkbox"/>

**2 November 2002.**

**Nyonya Kebaya - Malaysia's Fashion Heritage.**

The baju panjang, a simple, long, Arab-inspired cotton top, evolved into the shorter, embroidered voile kebaya of the Peranakan Chinese (the Baba or Nyonya). It had become the national dress for Malay women, but the number of specialist manufacturers was falling. This issue publicises the work of YA Bhg Datin Seri Endon Mahmood, the wife of the Deputy Prime Minister, in collecting examples of these garments and the publication of her book "The Nyonya Kebaya".

Designed by Hazel Design, this issue comprises four counter sheets (two for each value) and a miniature sheet.

**Counter sheets:**

The 29mm x 43mm designs showed differently coloured kebayas on hangers in:

30s.(A): Grey-green;

30s.(B): Red;

50s.(A): Yellow;

50s.(B): Pink.

They were printed in sheetlets of 10 by Percetakan Keselamatan Nasional using standard four-colour off-set lithography. The sheet had a notionally 4 x 3 format with what would have been positions R1/3-4 occupied by text and an illustration showing (30s.) gold and gem jewellery or (50s.) scarves and a scarf box. The labels and sheet margins had floral-pattern, coloured backgrounds to match the kebaya shown on the stamp. Sheet markings were "Kebaya Nyonya" in the top margin, colour dots (x4) to left and right of rows 1 and 3, 1A (x4) below R3/1 and R3/4 with sheet number below R3/1, Pos Malaysia emblem below R3/3 and "Reka Bentuk/Design A (or B) / Perekbentuk/Designer / Hazel Design untuk/for Pos Malaysia" below R3/4. Highest sheet numbers seen were 077274 (30s.(A)), 015807 (30s.(B)), 046083 (50s.(A)), 045582 (50s.(B)). The phosphor-coated paper gave a blue-white fluorescent reaction and a yellow-green after-glow under ultra-violet light. The paper normally had watermark Multiple SPM upright but all values exist inverted (sheet numbers seen included (30s.B) 007928/31, (50s.B) 002567)).

**Perforations:**

It would appear that there was a strong desire to avoid perforating through the text and design that occupied what would otherwise have

been stamp positions R1/3-4. In order to avoid this, while R2 and R3 were perforated by a comb perforator passing across the sheet from left to right, R1 was line perforated in three separate actions. An inverted-L shaped perforator was applied to the top and left of R1/1-2, then a straight line was applied to the right of R1/2. Perforators used were 12.7, 13.2 or 12.7 x 13.2 as listed as Formats A to C below. This process must have been time consuming and the two odd stamps varied in size quite significantly from sheet to sheet.

After the first 10,000 sheets or so of each value, it appears that the decision was taken to abandon it in favour of the simpler, but less aesthetically-pleasing, alternative of running the comb perforator across all three rows, creating two stamp-sized labels with parts of the text and illustration on them. Again, 12.7 or 12.7 x 13.2 perforators were used as listed as Formats D and E below.

The following perforating sheet formats have been found:



Format A: Rows 2 and 3 had comb perforation 12.7. Row 1 had 12.7 x 13.2 perforator was applied to the top and left of R1/1-2, then a 12.7 line was applied to the right of R1/2. R1/1 was therefore 12.7 x 13.2 and R1/2 was 12.7 x 13.2/12.7.

Format B: Rows 2 and 3 had comb perforation 12.7 x 13.2. Row 1 had 12.7 perforator was applied to the top and left of R1/1-2, then a 12.7 line was applied to the right of R1/2. R1/1-2 were therefore 12.7.

Format C: As B but the straight-line perforator was 13.2. R1/1 was therefore 12.7 and R1/2 was 12.7 x 12.7/13.2.

Format D: The sheets were comb perforated 12.7 x 13.2 from left to right on all three rows.

Format E: The sheets were comb perforated 12.7 from left to right on all three rows.

Sheets in each format have been seen numbered as per the table below:

Format:	A	B	C	D	E
30s.(A)	Not seen	Not seen	008000	Not seen	015570-077274
30s.(B)	Not seen	007931	007932	Not seen	015807
50s.(A)	003045	Not seen	Not seen	017622	046083
50s.(B)	002531-67	Not seen	Not seen	017077	045582

#### Miniature sheet:

The 70mm x 100mm RM2 sheet featured a kebaya and matching sarong on a mannequin. The single RM2 stamp was 35mm x 70mm and perforated 13.2, the right-hand side being applied separately as a single line. The watermark was normally upright. Sheets were numbered (highest seen was 073548).

An imperforate sheet was reported to have been purchased from Seremban GPO, but it was not officially issued in this form. <sup>5</sup>

#### First day facilities:

The presentation pack was sold at RM3. The envelope of the presentation pack featured two folded kebayas.

The first day cover, sold at 30s., featured three kebayas on mannequins. 100,000 were printed.

The first day postmark included a kebaya on a mannequin.



No.	S.G.	I.S.C.		Mint	Used
02.15.1	1100	936	30s.(A) P.12.7. Wmk. U.	<input type="checkbox"/>	<input type="checkbox"/>
02.15.1a	1100aw	-	- - Wmk. I.	<input type="checkbox"/>	<input type="checkbox"/>
02.15.1b	1100c	-	- P.12.7 x 13.2. Wmk. U.	<input type="checkbox"/>	<input type="checkbox"/>
02.15.1c	1100b	-	- P.12.7 x 12.7/13.2. Wmk. U.	<input type="checkbox"/>	<input type="checkbox"/>
02.15.2	1101	937	30s.(B) P.12.7. Wmk. U.	<input type="checkbox"/>	<input type="checkbox"/>
02.15.2a	1101aw	-	- - Wmk. I.	<input type="checkbox"/>	<input type="checkbox"/>
02.15.2b	1101c	-	- P.12.7 x 13.2. Wmk. U.	<input type="checkbox"/>	<input type="checkbox"/>
02.15.2c	1101cw	-	- - - Wmk. I.	<input type="checkbox"/>	<input type="checkbox"/>
02.15.2d	1101b	-	- P.12.7 x 12.7/13.2. Wmk. U.	<input type="checkbox"/>	<input type="checkbox"/>
02.15.3	1102	938	50s.(A) Wmk. U. P.12.7 x 13.2. Wmk. U.	<input type="checkbox"/>	<input type="checkbox"/>
02.15.3a	1102aw	-	- - Wmk. I.	<input type="checkbox"/>	<input type="checkbox"/>
02.15.3b	1102b	-	- P.12.7. Wmk. U.	<input type="checkbox"/>	<input type="checkbox"/>
02.15.3c	1102ba	-	- P.12.7 x 13.2/12.7. Wmk. U.	<input type="checkbox"/>	<input type="checkbox"/>
02.15.4	1103	939	50s.(B) Wmk. U. P.12.7 x 13.2. Wmk. U.	<input type="checkbox"/>	<input type="checkbox"/>
02.15.4a	1103aw	-	- - Wmk. I.	<input type="checkbox"/>	<input type="checkbox"/>
02.15.4b	1103b	-	- P.12.7. Wmk. U.	<input type="checkbox"/>	<input type="checkbox"/>
02.15.4c	1103bw	-	- - Wmk. I.	<input type="checkbox"/>	<input type="checkbox"/>
02.15.4d	1103ba	-	- P.12.7 x 13.2/12.7. Wmk. U.	<input type="checkbox"/>	<input type="checkbox"/>
02.15.4e	1103baw	-	- - Wmk. I.	<input type="checkbox"/>	<input type="checkbox"/>
02.15.5	MS1104	MC-294M	RM2 miniature sheet. Wmk. U.	<input type="checkbox"/>	<input type="checkbox"/>
02.15.5a	MS1104a	-	- Imperf.	<input type="checkbox"/>	<input type="checkbox"/>
02.15.6	-	MFDC-294	First day cover (1, 2, 3, 4).	<input type="checkbox"/>	<input type="checkbox"/>
02.15.6a	-	-	- (1, 2, 3a, 4).	-	<input type="checkbox"/>
02.15.6b	-	-	- (1, 2a, 3, 4).	-	<input type="checkbox"/>

No.	S.G.	I.S.C.		Mint	Used
02.15.6c	-	-	- (1b, 2c, 3b, 4b).	-	<input type="checkbox"/>
02.15.7	-	MFDC-294M	- (6).	-	<input type="checkbox"/>
02.15.8	-	MPP294	Presentation pack (1, 2, 3, 4).	<input type="checkbox"/>	<input type="checkbox"/>
02.15.8a	-	-	- (1, 2a, 3, 4).	<input type="checkbox"/>	<input type="checkbox"/>

29 November 2002.

80<sup>th</sup> Anniversary of Sultan Idris University of Education.



Sir George Maxwell, Chief Secretary of the FMS, opened the Sultan Idris Training College (SITC) for Malay teachers at Tanjong Malim in Perak on 29 November 1922 in the presence of Sultan Iskandar Shah of Perak. In 1957, it was renamed Maktab Perguruan Sultan Idris (MPSI). In 1975, female students were admitted for the first time. In 1987, it was upgraded to Insitute Perguruan Sultan Idris (IPSI). Finally, on 1 May 1997, it became Malaysia's first University of Education, the Universiti Pendidikan Sultan Idris (UPSI). The Suluh Budiman Building was the original college building. The Tadahan Selatan Building, originally a hall of residence, also dates from 1922 and was now also used for teaching. The Chancellery Building was built in 2000 and opened on 30 June 2001 on the site of an earlier hockey field.

Designed by Amber Communications, this issue comprised two counter sheets, one having se-tenant stamps.

#### Counter sheets:

There were originally to have been two 30s. and two 50s. The issued 40mm x 30mm designs were:

30s.: The Suluh Budiman Building;

50s.(A): The Tadahan Selatan Building;

50s.(B): The Chancellery Building <sup>6</sup>.

They were printed in sheets of 20, containing two panes of 10 (2 x 5), similar to Format E (issue 02.13) but with a wider bottom margin, by Percetakan Keselamatan Nasional using standard four-colour off-set lithography. 50s. design (A) appeared in columns 1 and 3 with (B) in 2 and 4. The sheets had a broad illustrated title panel at the top and broad text panel at the bottom and decorative margins. Other sheet markings were colour dots to left and right of rows 1 and 5, 1A (x4) below columns 1 and 4 Pos Malaysia and sheet number at bottom left; highest seen were 050403 (30s.) and 002587 (50s.). The phosphor-coated paper gave a blue-white fluorescent reaction and a yellow-green after-glow under ultra-violet light. The paper normally had watermark Multiple SPM sideways reading down. The stamps also exist sideways reading up.

The perforation method was as used for the 50s. stamp of the Za'ba issue. The sheets were perforated with downward-pointing combs starting with the top row and finished with a single line gauging 12.1 or 13.6 below the bottom row. Only left and right margins were perforated through. The comb perforations on the two panes of each sheet differ and there were at least four different sheet perforating formats:

Format A: The left pane was 13.6 x 13.4, the gutter and right pane being 12.1, the bottom row having 13.6 at the bottom. (Confirmed for the 30s. (008144 seen) and reconstructed from pieces for 50s.)

Format B: As Format A, but the bottom row was 12.1. (Confirmed for the 30s. (041638, 050403 seen)).

Format C: The perforations were reversed, the right pane being 13.6 x 13.4, the gutter and left pane being 12.1 with 13.6 at the bottom of the pane. (Confirmed for both values.)

Format D: Perforation 12.1 on both panes with [not recorded] at the bottom of the pane. (Confirmed for the 30s.)

Most gutter pairs from this issue therefore had mixed perforations. Study of the Za'ba issue suggests that sheets 13.6 x 13.4 throughout may also exist.

#### First day facilities:

So far as is known, there was no presentation pack. <sup>7</sup>

The first day cover, sold at 30s., featured the Suluh Budiman Building. They were numbered in a series of 80,000.

The first day postmark included the university's emblem.

No.	S.G.	I.S.C.		Mint	Used
02.16.1	1105	940	30s. P.13.6 x 13.4. Wmk. SD.	<input type="checkbox"/>	<input type="checkbox"/>
02.16.1a	1105aw	-	- - Wmk. SU.	<input type="checkbox"/>	<input type="checkbox"/>
02.16.1b	1105c	-	- P.12.1. Wmk. SD.	<input type="checkbox"/>	<input type="checkbox"/>
02.16.1c	1105cw	-	- - Wmk. SU.	<input type="checkbox"/>	<input type="checkbox"/>
02.16.1d	1105d	-	- P.12.1/13.6 x 12.1. Wmk. SD.	<input type="checkbox"/>	<input type="checkbox"/>
02.16.1e	1105b	-	- P.13.6/12.1 x 13.4. Wmk. SD. <sup>8</sup>	<input type="checkbox"/>	<input type="checkbox"/>
02.16.1f	1105bw	-	- - Wmk. SU.	<input type="checkbox"/>	<input type="checkbox"/>

No.	S.G.	I.S.C.		Mint	Used
02.16.2	1106d	-	50s.(A) P.13.6 x 13.4. Wmk. SD.	<input type="checkbox"/>	<input type="checkbox"/>
02.16.2a	1106dw	-	- - Wmk. SU.	<input type="checkbox"/>	<input type="checkbox"/>
02.16.2b	1106	941	- P.12.1. Wmk. SD.	<input type="checkbox"/>	<input type="checkbox"/>
02.16.2c	1106bw	-	- - Wmk. SU.	<input type="checkbox"/>	<input type="checkbox"/>
02.16.2d	1106c	-	- P.12.1/13.6 x 12.1. Wmk. SD.	<input type="checkbox"/>	<input type="checkbox"/>
02.16.3	1107d	-	50s.(B) P.13.6 x 13.4. Wmk. SD.	<input type="checkbox"/>	<input type="checkbox"/>
02.16.3a	1107dw	-	- - Wmk. SU.	<input type="checkbox"/>	<input type="checkbox"/>
02.16.3b	1107	942	- P.12.1. Wmk. SD.	<input type="checkbox"/>	<input type="checkbox"/>
02.16.3c	1107bw	-	- - Wmk. SU.	<input type="checkbox"/>	<input type="checkbox"/>
02.16.3d	1107c	-	- P.12.1/13.6 x 12.1. Wmk. SD.	<input type="checkbox"/>	<input type="checkbox"/>
02.16.4	1106da	-	Se-tenant pair (2, 3).	<input type="checkbox"/>	<input type="checkbox"/>
02.16.4a	1106dwa	-	- (2a, 3a).	<input type="checkbox"/>	<input type="checkbox"/>
02.16.4b	1106a	-	- (2b, 3b).	<input type="checkbox"/>	<input type="checkbox"/>
02.16.4c	1106bwa	-	- (2c, 3c).	<input type="checkbox"/>	<input type="checkbox"/>
02.16.4d	1106ca	-	- (2d, 3d).	<input type="checkbox"/>	<input type="checkbox"/>
02.16.5	-	MFDC-295	First day cover (1, 4b).	<input type="checkbox"/>	<input type="checkbox"/>
02.16.5a	-	-	- (1b, 4).	-	<input type="checkbox"/>
02.16.5b	-	-	- (1b, 4d).	-	<input type="checkbox"/>
02.16.5c	-	-	- (1b, 4b).	-	<input type="checkbox"/>

A large number of possible simple FDC stamp combinations may exist, plus gutter pairs and other multiples. The listed combinations have been seen by the author.

### 17 December 2002.

### Stamp Week (VII) - The Tame & The Wild.



Originally scheduled for 12 October 2002, the theme of Stamp Week 2002 was "The Tame and The Wild".

Designed by Teh Yew Kiang, this issue comprised two counter sheets, with se-tenant pairs, and two miniature sheets.

#### Counter sheets:

The 30mm x 40mm stamps and two 105mm x 75mm RM2 miniature sheets showed domestic and wild creatures:

30s.(A): Leopard Cat + kittens (Kucing Batu, *Felis bengalensis*);

30s.(B): Domestic Cat + kittens (Kucing Rumah, *Felis catus*);

RM1 (A): Sulphur-crested Cockatoo (Burung Kakaktua, *Cacatua sulphurea*);

RM1 (B): Buffy Fish-Owl (Burung Hantu Kuning, *Ketupa ketupu*).

The counter sheet stamps were printed in sheets of 20 (20-set Format A - see issue 02.9) by Percetakan Keselamatan Nasional using standard four-colour off-set lithography. Sheet markings included the issue title and Stamp Week emblem in the top margin, appropriate animal sketches in margins and gutter, sheet number (highest seen 000263 (30s.), 001171 (RM1) and designer name below R5/1, Pos Malaysia emblem below R5/4, 1A (x4) to right of R1/4 and left of R5/1, colour dots (x4) to left of R1/1 and right of R5/4. The phosphor-coated paper gave a greenish-white fluorescent reaction and a yellow-green after-glow under ultra-violet light. It had watermark Multiple SPM sideways reading down. The comb perforations measured 12.7 x 12.5. The top margin was imperforate, the others being perforated through.

**Miniature sheet:**

The two RM2 miniature sheets were 105mm x 75mm.

Sheet A had two 40mm x 30mm stamps:

RM1 (C): Goldfish (Ikan emas, *Carassius auratus*).

RM1 (D): Porcupine Fish (Ikan buntal, *Diodon liturosus*).

The sheets were numbered (highest seen 069148). They had watermark Multiple SPM sideways reading down.

Perforations were complex. Sheet A had either 13.6 x 13.4 plus 13.6/12.1 x 13.4 (000846, 035167, 040990, 043717 seen) or both stamps 13.6/12.1 x 13.4 (020989, 030011, 036222, 039009/368 seen) or both 13.6 x 13.4 (041182, 069148).

Sheet B had two 30mm x 40mm stamps:

RM1 (E): Giant Squirrel (Kerawak Hitam, *Ratufa affinis*);

RM1 (F): Rabbit (Arnab, *Oryctolagus cuniculus*).

The sheets were numbered (highest seen 050648). They had watermark Multiple SPM upright. Perforations were either both stamps 13.4 x 13.6 (ranges 030321-037455, 043685-050648 seen) or both stamps 13.4 x 13.6/12.1 (028906 and range 039781-043130 seen). Other combinations may exist.

**Imperforate miniature sheets:**

Both sheets exist imperforate. Such sheets have been seen numbered 077775-094367 (A) or 088426-098763 (B).

**First day facilities:**

The presentation pack was sold at RM4. The envelope of the presentation pack featured the design of miniature sheet B.

The first day cover, sold at 30s., featured mice. They were numbered in a series of 150,000.

The first day postmark included a cat and a mouse. Special postmarks were also produced for the other days, including a cockatoo (18 December) or owl (19 December). [20-23 December subjects were not recorded]. Covers exist signed by the designer in Roman script (Penang 17 December) or Chinese characters (Penang 19 December).

No.	S.G.	I.S.C.		Mint	Used
02.17.1	1108	943	30s.(A).	<input type="checkbox"/>	<input type="checkbox"/>
02.17.2	1109	944	30s.(B).	<input type="checkbox"/>	<input type="checkbox"/>
02.17.3	1108a	-	Se-tenant pair (1, 2).	<input type="checkbox"/>	<input type="checkbox"/>
02.17.4	1110	945	RM1 (A).	<input type="checkbox"/>	<input type="checkbox"/>
02.17.5	1111	946	RM1 (B).	<input type="checkbox"/>	<input type="checkbox"/>
02.17.6	1110a	-	Se-tenant pair (4, 5).	<input type="checkbox"/>	<input type="checkbox"/>
02.17.7	-	-	RM1 (C). P.13.6 x 13.4 (from m/s A).	<input type="checkbox"/>	<input type="checkbox"/>
02.17.7a	-	-	- P.13.6/12.1 x 13.4 (from m/s A).	<input type="checkbox"/>	<input type="checkbox"/>
02.17.8	-	-	RM1 (D). P.13.6/12.1 x 13.4 (from m/s A).	<input type="checkbox"/>	<input type="checkbox"/>
02.17.8a	-	-	- P.13.6 x 13.4 (from m/s A).	<input type="checkbox"/>	<input type="checkbox"/>
02.17.9	-	-	RM1 (E). P.13.6 x 13.4/12.1 (from m/s B).	<input type="checkbox"/>	<input type="checkbox"/>
02.17.9a	-	-	- P.13.6 x 13.4 (from m/s B).	<input type="checkbox"/>	<input type="checkbox"/>
02.17.10	-	-	RM1 (F). P.13.6 x 13.4/12.1 (from m/s B).	<input type="checkbox"/>	<input type="checkbox"/>
02.17.10a	-	-	- P.13.6 x 13.4 (from m/s B).	<input type="checkbox"/>	<input type="checkbox"/>
02.17.11	MS1112a	- <sup>9</sup>	RM2 m/s A (7, 8).	<input type="checkbox"/>	<input type="checkbox"/>
02.17.11a	MS1112	-	- (7, 8a).	<input type="checkbox"/>	<input type="checkbox"/>
02.17.11b	MS1112b	-	- (7a, 8).	<input type="checkbox"/>	<input type="checkbox"/>
02.17.12	MS1112c	-	- Imperforate.	<input type="checkbox"/>	<input type="checkbox"/>
02.17.13	MS1112da	-	RM2 m/s B (9, 10).	<input type="checkbox"/>	<input type="checkbox"/>
02.17.13a	MS1112d	-	- (9a, 10a).	<input type="checkbox"/>	<input type="checkbox"/>
02.17.14	MS1112db	-	- Imperforate.	<input type="checkbox"/>	<input type="checkbox"/>

No.	S.G.	I.S.C.		Mint	Used
02.17.15	-	MFDC-296	First day cover (3, 6).	<input type="checkbox"/>	<input type="checkbox"/>
02.17.15a	-	-	- (3)	-	<input type="checkbox"/>
02.17.15b	-	-	- (6)	-	<input type="checkbox"/>
02.17.15c	-	-	- (Gutter strip of two 3)	-	<input type="checkbox"/>
02.17.15d	-	-	- (Gutter strip of two 6)	-	<input type="checkbox"/>
02.17.16	-	-	- (11)	-	<input type="checkbox"/>
02.17.16a	-	-	- (11a)	-	<input type="checkbox"/>
02.17.17	-	-	- (12)	-	<input type="checkbox"/>
02.17.18	-	-	- (13a)	-	<input type="checkbox"/>
02.17.19	-	-	- (14)	-	<input type="checkbox"/>
02.17.20	-	-	Cover used on: 18Dec <input type="checkbox"/> 19Dec <input type="checkbox"/> 20Dec <input type="checkbox"/> 21Dec <input type="checkbox"/> 22Dec <input type="checkbox"/> 23Dec <input type="checkbox"/> .		
02.17.21	-	MPP-296	Presentation pack (3, 6).	<input type="checkbox"/>	<input type="checkbox"/>

## NOTES

<sup>1</sup> Confirmed for 50s. and RM1.

<sup>2</sup> The possibility that the vertical end was misplaced exactly one perforation was considered, but this would leave tell-tale signs of double perforation as the vertical pitch was not a perfect match, and these were not present.

<sup>3</sup> Offered in Spink London auction 12 November 2008. However, it has been established by PSM that such a design has never been authorised or submitted to the Stamp Advisory Board for approval. (Reported by Mr. C. Wong 25 May 2009).

<sup>4</sup> It has not been possible to verify a report that the 13.6 x 13.4 stamp exists with 12.1 at right.

<sup>5</sup> Reported by Mr. C. Wong 25 May 2009.

<sup>6</sup> Misspelt on stamp "Chancellory".

<sup>7</sup> ISC listed a pack, believed to be in error.

<sup>8</sup> Reported by Mr. M. Kingsland 25Sep2013.

<sup>9</sup> ISC MC-296M applies to a pair of sheets (MC-296Mi if imperforate).